

BAWA
leisure

Conferencing





Business Meetings

Conferences

Seminars

Training

Networking

Exhibitions

Lectures

Team Building

Let's get down to business!

BAWA Leisure has eight excellent event spaces that are suitable for conferencing, meetings and training, along with a 33 acre sports field excellent for team building and corporate away days which makes us the ideal venue for your event.

The Ballroom and Concorde Room have been fully refurbished in a fresh contemporary style that has created a space your delegates can enjoy, we also have a number of smaller spaces that are perfect for syndicate groups, interviews or for the smaller meeting.

As standard at BAWA, we will provide a friendly, personal yet professional service and are very proud of our reputation for excellence, built up with our clients over many years. Our in-house dedicated team will ensure that you and your delegates get the best out of your day and oversee the smooth running of your event.

All catering and refreshments are freshly prepared on site by our catering team and we can provide a wide range of lunch options and cater for all dietary requirements.

BAWA has excellent transport links and a complimentary car park on site for up to 350 vehicles, so there is no need for your delegates to worry about city centre parking or charges.

We would be delighted to welcome you to BAWA Leisure.



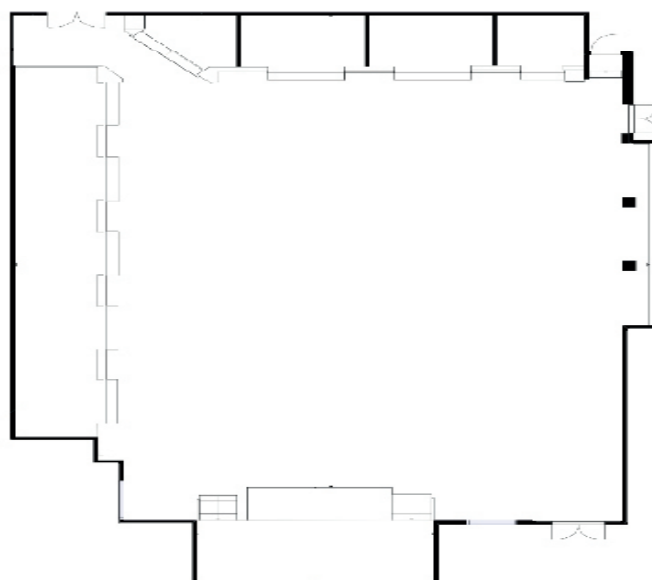
The Ballroom

Fully refurbished in 2020, the Ballroom is our largest event space and regularly used for larger conferences and also exhibitions and trade fairs.

Key note speakers can be seen by all delegates from the large stage area, or separate pull-out stage if required. A large drop down projector screen and ceiling mounted projector are provided and there is also a fully integrated PA system available in the room.

Large spaces to the side and back of the Ballroom is ideal for refreshments and lunch service and the additional alcove spaces can provide an area for breakout meetings or just some additional space for your delegates to relax and enjoy refreshments.

The Ballroom is fully air conditioned and free wifi is available for all delegates throughout the day.



L X W (m)	23.2m x 18.3m
m2	424.6m2
Theatre	350/500 inc alcoves
U-Shaped	n/a
Classroom	200/300 inc alcoves
Boardroom	n/a
Banquet	220/320 inc alcoves



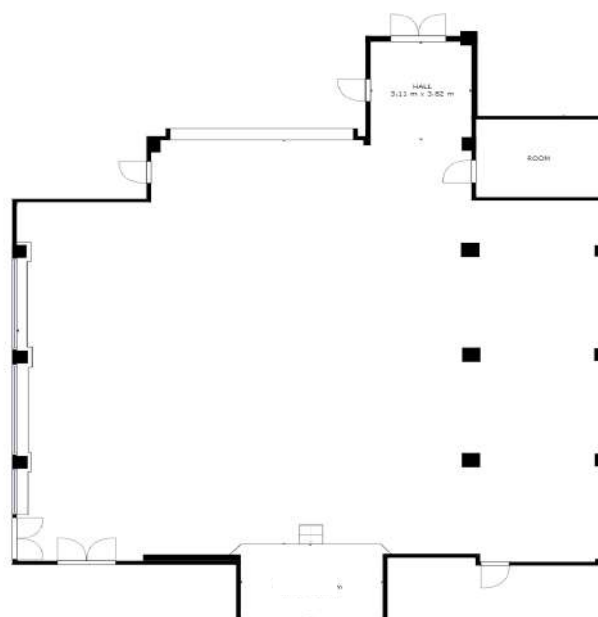
The Concorde Room

The Concorde Room has also benefited from a full refurbishment in 2020 and is an excellent light and airy event space that benefits from natural daylight from large windows that look out onto our sports field.

There is an excellent stage area for speakers and a drop down projector screen, ceiling mounted projector and an integrated PA system all come as standard.

At the end of the day the private bar located at the back of the Concorde Room can be a welcome addition for all your delegates.

The Concorde Room is fully air conditioned and free wifi is available for all delegates on the day.



L X W (m)	16.2m x 17.1m
m2	277m2
Theatre	200
U-Shaped	n/a
Classroom	150
Boardroom	n/a
Banquet	140



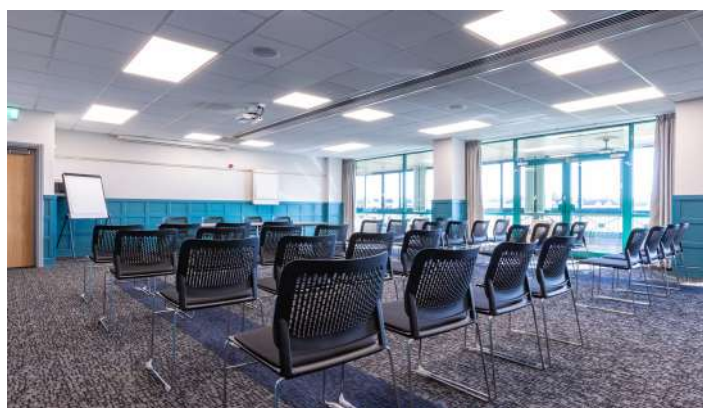
Conference Room One

Situated on the first floor of the main pavilion building, Conference Room One is a popular choice with a flexible space for meetings and conferences, it be used with Rooms 2 and 3 as breakout rooms.

Floor to ceiling windows provide plenty of natural daylight and there is direct access to the balcony area which has views over our sports field. The balcony area provides a welcome space for delegate breaks, lunch or registration area.

There is a drop down projection screen and ceiling mounted projector, dry wipe boards and integrated sound system.

The room is fully air conditioned and free wifi is available for all delegates throughout the day.



L X W (m)	11.9m x 8m
m2	95.2m2
Theatre	100
U-Shaped	36
Classroom	32
Boardroom	40
Banquet	n/a





Conference Room Two & Three

Located on the first floor of the main pavillion building and directly opposite conference room one, these two rooms are ideal for smaller meetings, seminars or interviews and also regularly used as breakout spaces for conferences held in conference room one.

Both conference room two and three have large windows which allow natural daylight to flood in and make the room light and airy. The rooms have black out curtains if required when using the projector screens.

These rooms can be booked individually or as a package for both rooms or with conference room one as breakout rooms.

	Room 2	Room 3
L X W (m)	5.8m x 4m	6.1m 4m
m2	23.2m2	24.4m2
Theatre	20	20
U-Shaped	14	14
Classroom	8	8
Boardroom	16	16
Banquet	n/a	n/a



Conference Room Four, Five & Six

Located at the rear of the main pavillion building and accessed through our sports reception, conference rooms four, five and six are also ideal for smaller meetings, seminars or interviews.

These rooms are a popular choice for smaller private clubs and associations and can be booked for evening meetings or events with other club members.

Conference room four benefits from natural daylight and also has direct access into conference rooms five and six, allowing for extra space or breakout rooms.

These rooms can be booked individually or packages are available for mulitple room hire on the day.

	Room 4	Room 5	Room 6	Room 5 & 6
L X W (m)	11.9m x 7.3m	5.2m x 3.7m	4.9m x 3.7m	10.1m x 7.4m
m2	86.9m2	19.2m2	18.1m2	74.7m2
Theatre	80	25	25	50
U-Shaped	32	14	14	28
Classroom	32	8	8	16
Boardroom	36	16	16	32
Banquet	n/a	n/a	n/a	n/a



Catering and Refreshments

We know that good food and refreshments is a key factor to any successful event, conference or meeting and also just how important it is to keep all your delegates refuelled and refreshed during the course of the day therefore we offer an excellent catering service from our in-house catering facilities and staff.

We have some excellent menu packages and choices available to suit all tastes and budgets or you can let us know what your planned budget is for your event or what ideas you have and we will be delighted to put a bespoke menu together for you.

Every event will have delegates with special dietary requirements and allergies. Our in-house catering team are used to looking after guests with all sorts of different diets such as dairy free, coeliac or nut allergies and of course, vegetarians and vegans. No matter how complex the request, you can be assured all of your delegates will be looked after.

Freshly brewed tea and locally roasted coffee can be served as a welcome and during morning and afternoon breaks at times suitable to your programme and requirements.





Delegate Rates 2024

Room	Delegate Rate		Minimum Delegates	Delegate Numbers	Delegate Rate	
	Full Day	Half Day			Full Day	Half Day
Ballroom	£40	£18	50	40 to 49	£43	£22
Concorde Room	£40	£18	50	40 to 49	£43	£22
Room One	£38	£18	35	25 to 34	£43	£22
Room Two	£38	£20	10	7 to 9	£48	£24
Room Three	£38	£20	10	7 to 9	£48	£24
Room Four	£36	£18	35	25 to 34	£40	£21
Room Five	£30	£15	10	7 to 9	£36	£20
Room Six	£30	£15	10	7 to 9	£36	£20

Delegate Package

Room Hire
Complimentary on site parking
Unlimited free Wi-Fi
All audio visual equipment
Water

Arrival Tea, Coffee & Biscuits
Mid-morning Tea, Coffee & Biscuits*
Lunch Bowl with Fruit Juice~
Mid-afternoon Tea, Coffee & Biscuits*

*Full Day package only
~Fork Buffet Lunch for additional £4 per delegate
Lunch can be added to the Half Day Package for £12 per delegate

Full Day 8am to 5.30pm
Half Day 8am to 12.30pm or 1pm to 5.30pm

Delegate numbers below the minimum will be charged on an item by item basis.

Lunch Bowl Menu

included in Delegate Rate

A maximum of three lunch bowl options



Chicken Teriyaki with Rice



Salmon and Potato with Lemon Crème
Fraiche



Falafel Mixed Salad with Mint Yoghurt
[Ve, V, G]



Pasta Caprese Salad with Classic Pesto
[V, G]



Chicken Caesar Salad



Ploughmans

PLUS

Caramel Chocolate Brownies
Vegan Flapjacks

Fresh Fruit Juice



Fork Open Buffet Lunch

additional £5 per delegate

Roast Meats and full salad selection

Accompanied by

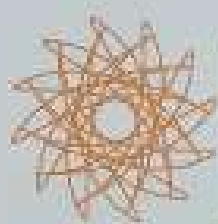
Chicken Wings
Prawn Salad
Pork Pie
Salmon Skewers
Selection of Dimsums and Samosas

Sweet

White Chocolate and Raspberry Cheesecake
Carrot Cake

Fresh Fruit Juice





BAWA
leisure

WELCOME

Travelling to BAWA Leisure

By Car

SAT NAV POSTCODE - BS34 7RF

M5 Junction 16
A38 Exit to Thornbury/Filton
4 miles / 10 minutes

By Train

The nearest train station is Bristol Parkway and is a 2.4 mile/7 minute car journey to BAWA Leisure. Bristol Temple Meads located in the centre of Bristol is a 4.7 mile/18 minute car journey.

By Plane

The nearest airport is Bristol International Airport and is a 13 mile/30 minute car journey to BAWA Leisure.

Hotels

Hotel	Rating	Distance	Contact Details
Bristol Filton Premier Inn	●●●	0.7 miles 2 mins	0333 777 3963 www.premierinn.com
Village Hotel	●●●●	2.1 miles 5 mins	0117 450 7800 www.village-hotels.co.uk
Travelodge Bristol Filton	●●●	2 miles 6 mins	0871 559 1883 www.travelodge.co.uk
Doubletree Bristol North	●●●●	3.7 miles 9 mins	01454 201 144 www.hilton.com/doubletree
Aztec Hotel and Spa	●●●●	3.7 miles 9 mins	01454 201 090 www.aztechotelbristol.co.uk
Holiday Inn Express	●●●	1.7 miles 5 mins	0371 902 1604 www.ihg.com
Holiday Inn	●●●●	3.3 miles 8 mins	0871 942 9014 www.ihg.com

Contact us...

To find out more about the conference facilities at BAWA Leisure, availability and arranging a visit of the venue, please contact our conference team.

+44 (0)117 976 8064 option 1

info@bawaleisure.co.uk

www.bawa.biz

Take a virtual tour!



See the Ballroom, Concorde Room and Pavilion Lounge including images of the all the rooms set up in various meeting formats by taking a virtual tour. Scan the QR code below or go to our website www.bawa.biz

